

# 10



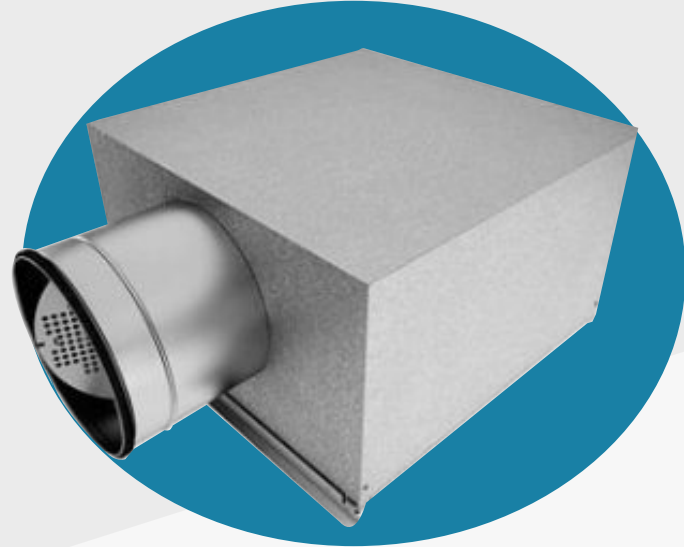
## COMMON HVAC TERMS

It is not uncommon to feel confused when your HVAC technician starts using technical terms that you do not understand. When you understand the terminology, you will be ready to make a smart choice about repairing or replacing your heating and air conditioning system. Don't worry, we're here to help!

Here are **ten common HVAC terms** you may hear your technician use during a service call.

### 1 MERV

This stands for **Minimum Efficiency Reporting Value**. This is how a filter is rated for your system. The higher the rating, the more efficient a filter is. Generally, the highest rated filter is **MERV 16**, which is a hospital quality filter that captures the smallest of particles in the air.

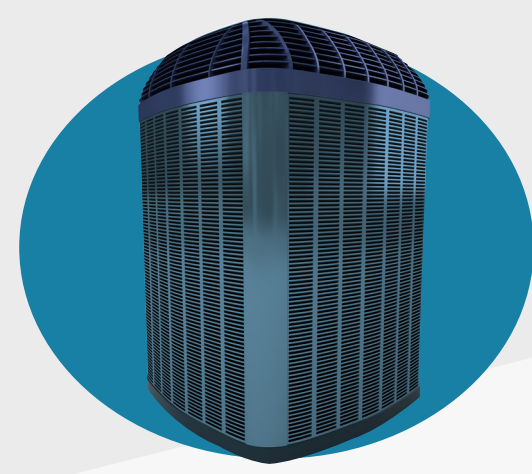


### 2 PLENUM

This is the **piece of ductwork** that is attached to either the **return side** or the **supply side** of the air handler, where the other ducts are attached. On the side that has the return, you may find that there is a filter where the air flows into the air handler.

### 3 COMPRESSOR

This is the **part of the air conditioner** that sits inside the condenser. When you hear a lot of noise coming from your system, this is likely where that noise is coming from. It is responsible for circulating and raising the pressure of the refrigerant in your system.

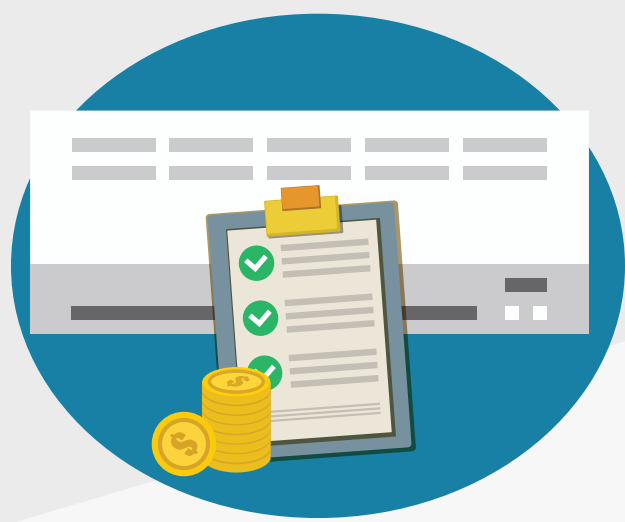


### 4 HEAT PUMP

A heat pump looks like a normal air conditioning condensing unit, but it can use electricity to efficiently heat your home in the winter and also cool your home in the summer just like a standard air conditioning system.

### 5 LINE SET

These are the **two lines of refrigerant** that connect the evaporator coil and condensing unit. The small, copper tube is the liquid line, while the large and more insulated tube is the suction line.



### 6 SEER

This stands for **Seasonal Energy Efficiency Ratio**. This measures the efficiency of an air conditioner. This is calculated by taking the BTU/hour of cooling divided by the watts of electricity over an entire cooling season.

The minimum SEER rating a system have is 13. The higher the SEER rating, the more energy efficient a system the more money you will save on your electric bills.

### 7 REGISTER

This is the **cover over the inlets and outlets** of your ductwork. It has louvers that lets the user control the airflow.



### 8 AIR HANDLER

This is the **unit inside the house** that circulates air through the duct system. It is paired with a split system air conditioner or heat pump. This is the box that contains the blower. It also usually contains the evaporator coil and other heating/cooling elements.

### 9 LOAD CALCULATION

This calculation determines how much heating or cooling your home needs. Your HVAC technician does a load calculation to determine how much heat is gained or lost in order to properly size the system that you need for your home.



### 10 TONNAGE

This is a **measure of the cooling capacity** of the air conditioner. One ton of cooling is equal to 12,000 BTU/hour. BTU, or British Thermal Unit, is a measure of energy. It is used to measure how much heat the air conditioner can remove.

[Click here to connect with a pro from the HVAC.com Contractor Network today!](#)

#### Sources

<http://www.energyvanguard.com/blog-building-science-HERS-BPI/-bid/40761/Learn-the-Lingo-Air-Conditioning-Terminology-Tidbits>

<http://energy.gov/energysaver/heat-pump-systems>

**HVAC.com**  
Heat • Air • Experts who care